

Awning and Casement Window

Please also see:

[Standard Aluminum Options](#)

[Full Lifetime Warranty](#)

Overview

All Standard Aluminum Series Casement and Awning windows are available in both standard and custom sizes to match virtually any design, either new or retrofit.

Components

FRAME

Frame components are made from 6063-T5 aluminum alloy with a structural wall thickness of .125", and non-structural wall thickness of .062". The frame is available in clear and bronze anodized finishes with a standard .4" mil coating thickness, and white baked enamel finish. Wide screw spacing on the mechanically joined corners ensure a rigid connection with a consistent dimension. Corners are sealed for added protection from the weather.

Awning and casements are available with either a standard frame with nail-on fin, or with Milgard's specially designed H-Bar™ frame for wood stop or retrofit application. The standard frame is 2-1/4" in width and the H-Bar is 1-1/4" wide with 5/8" legs that provide a surface area for wood stop installation. Both types utilize 3/4" overall glazing for either fixed or vented sections.

NAIL-ON FIN

An integral nailing fin extends 1" around the perimeter of the standard frame and is used to attach the window into the rough opening. The fin is scored for complete removal for retrofit/wood stop installations. The fin is set back 1-1/16" from the exterior edge of the frame. The optional H-Bar frame has no nailing fin and must be stopped in the opening.

WEEP SYSTEM

The rectangular weep holes are located in the frame sill for effective drainage and moisture control.

GLAZING MATERIAL

AAMA approved glazing tape adheres glass to the fixed and vent frame and seals and cushions the glass. Rigid vinyl setting blocks are used to support the glass-unit, preventing glass slip-page and glass-to-metal contact. Extruded vinyl glazing (snapin) bead is applied around the exterior edge. Metal bead is available at some locations.

GLASS

Glass options are available in 3/4" overall insulating units in clear, tinted, reflective, obscure, Low-E, and safety glass. Other specialty glass is available upon request.

VENT PANEL

The vent features a clean appearance and rigid construction with mitered and mechanically joined corners. Due to weight limitations of the hinging

system, the vent is restricted to a maximum size of 12 square feet for awnings and 15 square feet for casements.

HINGES

Two types of hinges are available with awning/casement, one standard and one for egress application. The stainless steel egress hinge allows a full 90 degree rotation opening. The standard hinge is zinc-plated steel with a sliding brass shoe, which is tension adjustable and is completely concealed when the window is in a closed position. Each vent uses two hinges.

WEATHERSTRIPPING

For casements and awnings, a dual durometer vinyl bulb seal surrounds the entire perimeter of the vent frame, creating a positive, weather tight seal.

LOCKING ASSEMBLY

Friction Hardware

Hand-operated push out latch located on the vent which secures against a polyester strike plate and provides a positive lock and tight seal.

Note: On Casements over 36" in height, two handles are utilized to ensure a tight seal.

SCREEN

Screen frames are aluminum, finished with three coats of color matched baked polyester for long-term durability. The screen material is an attractive, low maintenance, gray fiberglass mesh. Screens are installed on the inside of casement and awning windows using four screw-mounted vinyl L-clips that secure through pre-drilled holes in the window frame. A wicket may be inset into the screen, giving access to the lock for vent operation.

Options

GRIDS

Available in 5/8" standard or 1-1/16" sculptured aluminum pro-files sealed between panes.

WARM EDGE SPACER

Spacer available in a standard clear finish or optional bronze or champagne finish in the airspace of the insulating glass units. PGG Intercept™ warm-edge steel spacer available in certain regions (standard in some areas.) Contact your Milgard Representative for spacers used in your area.

STUCCO FIN

1 3/8" fin setback. Check with your Milgard Representative for availability.

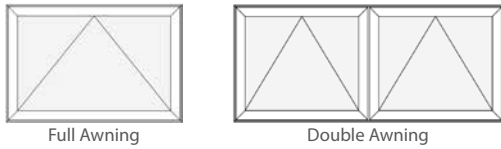
TEST STANDARDS

Contact your Milgard Representative for specific test data.

CAUTION: The use of petroleum based fuels or solvents as release agents in stucco wall installations or glass cleaning will chemically attack materials used in seals and other components, and voids the Milgard Full Lifetime Warranty. The use of wax based release agents is recommended. Expanding foam for insulation purposes should not be used. Non-expanding foam or loose packed batt insulation is recommended.

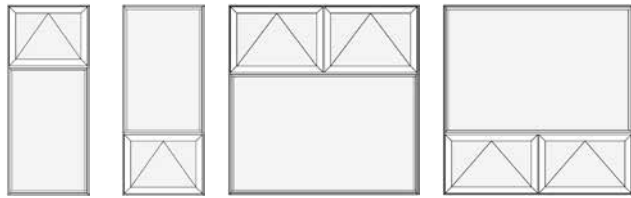
Awning and Casement Window

Configurations



Full Awning

Double Awning

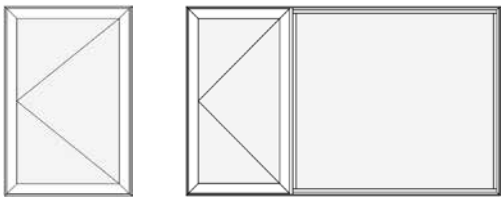


Top Awning

Bottom Awning

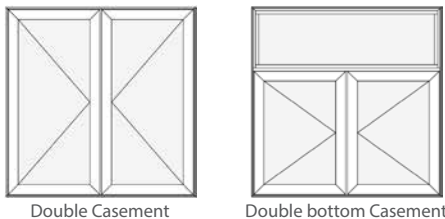
Double Awning Top

Double Awning Bottom



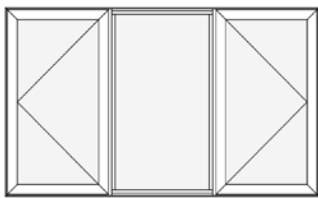
Full Casement

Single Casement



Double Casement

Double bottom Casement



Double Casement with Picture

Minimum/Maximum Sizes

FULL AWNING

- Min 1⁶1⁶ Max 4⁰3⁰

DOUBLE AWNING

- Min 3⁰1⁶ Max 8⁰3⁰

BOTTOM AWNING

- Min 1⁶2⁰ Max 4⁰8⁰

FULL CASEMENT (ROTO)

- Min 1⁶1⁶ Max 2⁶5⁰

FULL CASEMENT (PUSH OUT)

- Min 1⁶1⁶ Max 2⁶5⁰

SINGLE CASEMENT (ROTO)

- Min 3⁰1⁶ Max 8⁰5⁰

DOUBLE CASEMENT (ROTO)

- Min 3⁰1⁶ Max 5⁰5⁰

Available Frame Styles

- 1" Setback
- 1-3/8" Setback
- Standard Z-bar
- No Fin (Block Frame)
- H-Bar (Slope Sill)

NOTE: For engineering approval contact your Milgard representative for any configuration over 40 square feet. Each Milgard Manufacturing plant reserves the right to alter or change sizes and configurations according to location capabilities. Ask your Milgard rep about specialty applications. Windows over 40 square feet shipped open for field glazing. Varies by location.

Not all frame styles available at all Milgard locations. Contact your Milgard Representative for more information.

Drawings - Quick Links

Awning Window

11—1-1/16" Setback - Push Open

12—1-3/8" Fin Setback - Push Open

13—1-3/8" Fin Setback - Crank Open

14—Block Frame - Crank Open

15—Block Frame - Push Open

16—Block Frame - Push Open

Casement Window

17—1-3/8" Setback - Push Open

18—1-3/8" Setback - Crank Open

19—1-1/16" Setback - Push Open

20—1-1/16" Setback - Crank Open

21—Block Frame - Push Open

22—Block Frame - Crank Open

Revit, SketchUp, .PDF and .DWG files can be accessed at milgard.com/professionals or clicking here:

[Standard Aluminum Architectural Library](#)

Standard Aluminum

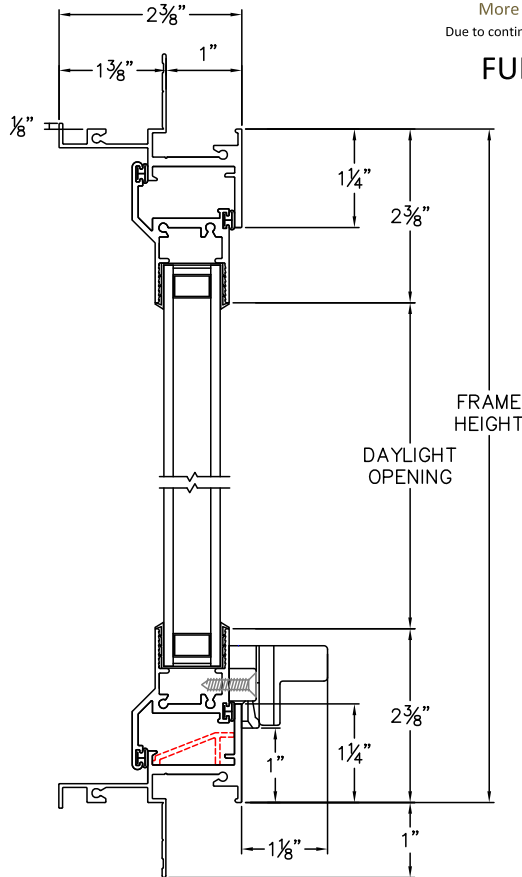
Awning Window

1-3/8" Fin Setback - Push Open

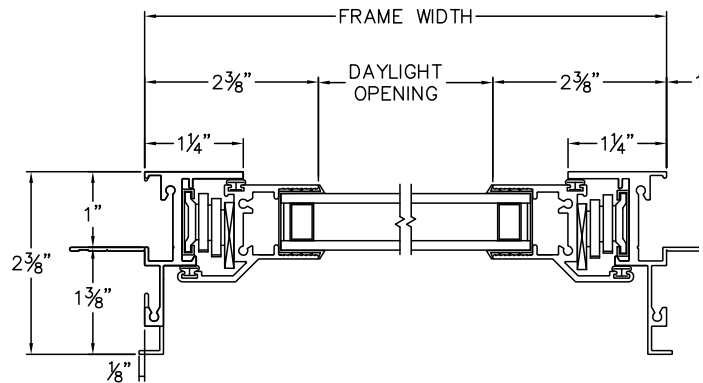
CAD File Scale	View	File Name	Units
NTS	Horizontal & Vertical	Aluminum_910S_FA_1.375in_push-open	Inch

More Technical Documents can be found at milgard.com/professionals
Due to continual research and development, details may be changed at any time. ©2013 Milgard Mfg.

FULL AWNING - PUSH OPEN SERIES 910S



HEAD & SILL



JAMBS

Revit, SketchUp, .PDF and .DWG files can be accessed at milgard.com/professionals or clicking here:

[Standard Aluminum Architectural Library](#)

[Go back to Quick Links](#)

Standard Aluminum

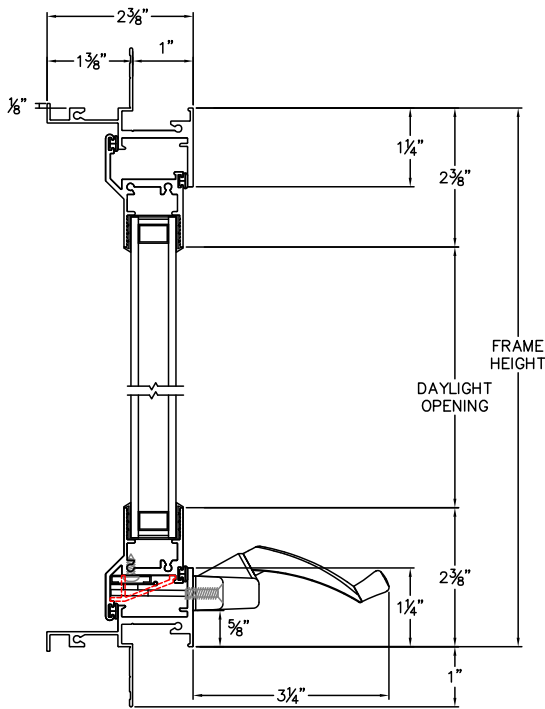
Awning Window

1-3/8" Fin Setback - Crank Open

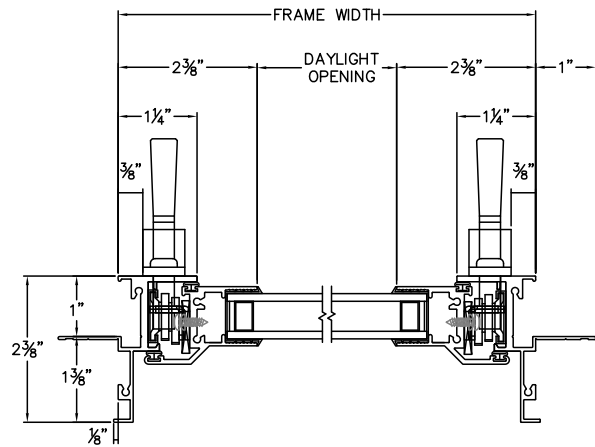
CAD File Scale	View	File Name	Units	Revis
NTS	Horizontal & Vertical	Aluminum_910S_FA_1.375in_crank-open	Inch	1/2C

More Technical Documents can be found at milgard.com/professionals
Due to continual research and development, details may be changed at any time. ©2013 Milgard Mfg.

FULL AWNING - CRANK OPEN SERIES 910S



HEAD & SILL



JAMBS

Revit, SketchUp, .PDF and .DWG files can be accessed at milgard.com/professionals or clicking here:

[Standard Aluminum Architectural Library](#)

[Go back to Quick Links](#)

Standard Aluminum

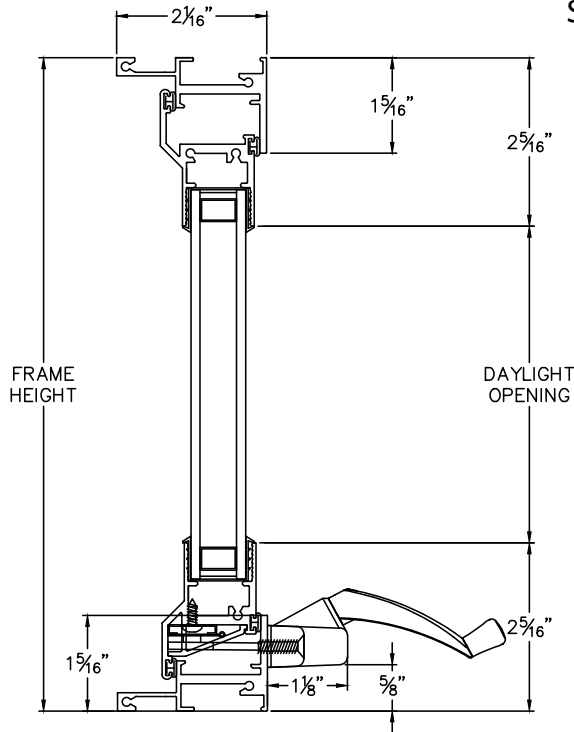
Awning Window

Block Frame - Crank Open

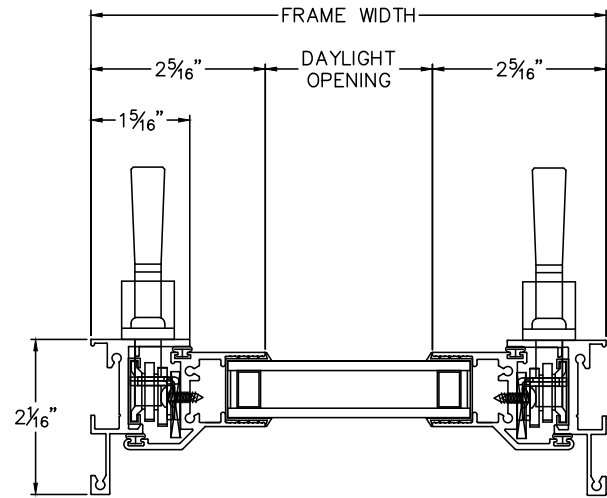
CAD File Scale	View	File Name	Units	Revi:
NTS	Horizontal & Vertical	Aluminum_910C_FA_block_crank_open	Inch	9/21

More Technical Documents can be found at milgard.com/professionals
Due to continual research and development, details may be changed at any time. ©2013 Milgard Mfg.

FULL AWNING - CRANK OPEN SERIES 910C



HEAD & SILL



JAMBS

Revit, SketchUp, .PDF and .DWG files can be accessed at milgard.com/professionals or clicking here:

[Standard Aluminum Architectural Library](#)

[Go back to Quick Links](#)

Standard Aluminum

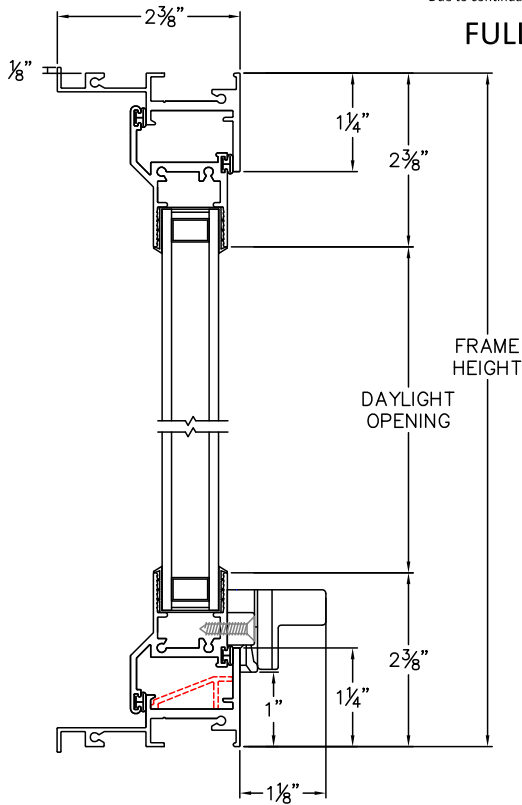
Awning Window

Block Frame - Push Open

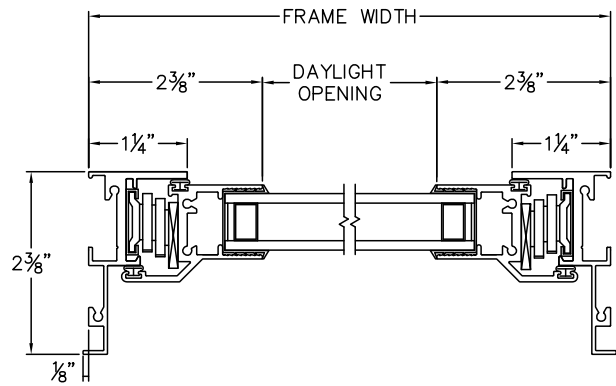
CAD File Scale	View	File Name	Units
NTS	Horizontal & Vertical	Aluminum_910S_FA_block_push-open	Inch

More Technical Documents can be found at milgard.com/professionals
Due to continual research and development, details may be changed at any time. ©2013 Milgard Mfg.

FULL AWNING - PUSH OPEN SERIES 910S



HEAD & SILL



JAMBS

Revit, SketchUp, .PDF and .DWG files can be accessed at milgard.com/professionals or clicking here:

[Standard Aluminum Architectural Library](#)

[Go back to Quick Links](#)

Standard Aluminum

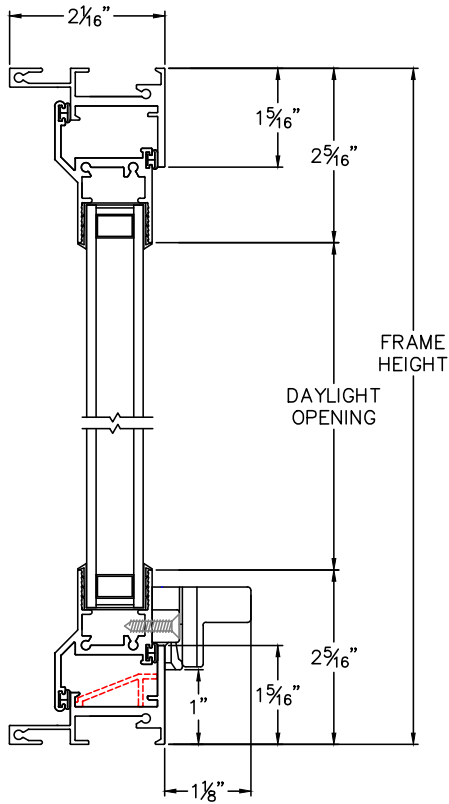
Awning Window

Block Frame - Push Open

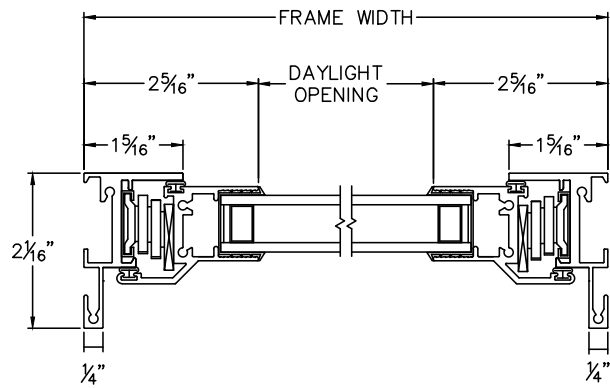
CAD File Scale	View	File Name	Units
NTS	Horizontal & Vertical	Aluminum_910C_FA_block_push-open	Inch

More Technical Documents can be found at milgard.com/professionals
Due to continual research and development, details may be changed at any time. ©2013 Milgard Mfg.

FULL AWNING - PUSH OPEN SERIES 910C



HEAD & SILL



JAMBS

Revit, SketchUp, .PDF and .DWG files can be accessed at milgard.com/professionals or clicking here:

[Standard Aluminum Architectural Library](#)

[Go back to Quick Links](#)

Standard Aluminum

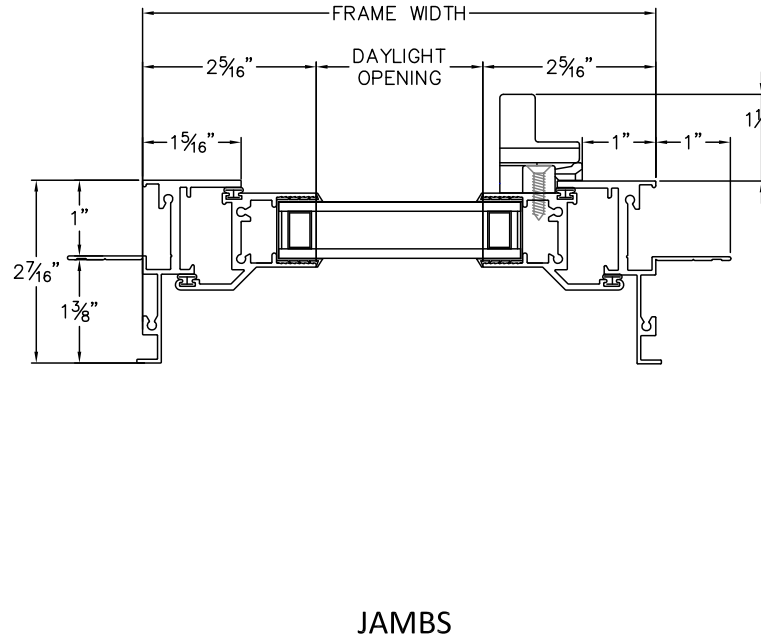
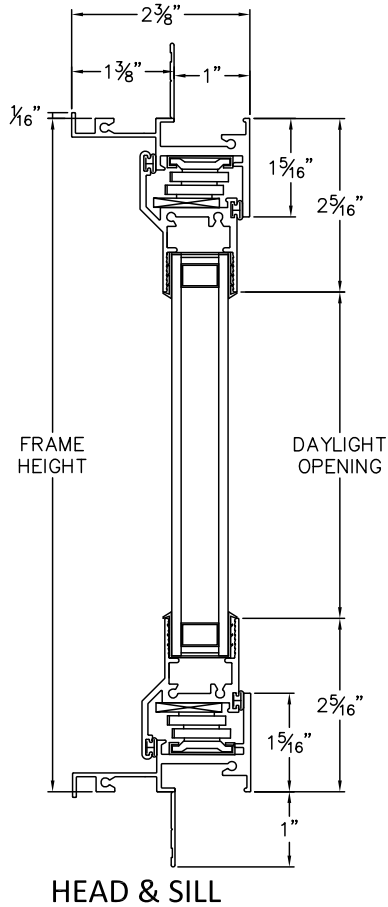
Casement Window

1-3/8" Setback - Push Open

CAD File Scale	View	File Name	Units
NTS	Horizontal & Vertical	Aluminum_910S_FC_1.375_push-open	Inch

More Technical Documents can be found at milgard.com/professionals
Due to continual research and development, details may be changed at any time. ©2013 Milgard Mfg.

FULL CASEMENT - PUSH OPEN SERIES 910S



Revit, SketchUp, .PDF and .DWG files can be accessed at milgard.com/professionals or clicking here:

[Standard Aluminum Architectural Library](#)

[Go back to Quick Links](#)

Standard Aluminum

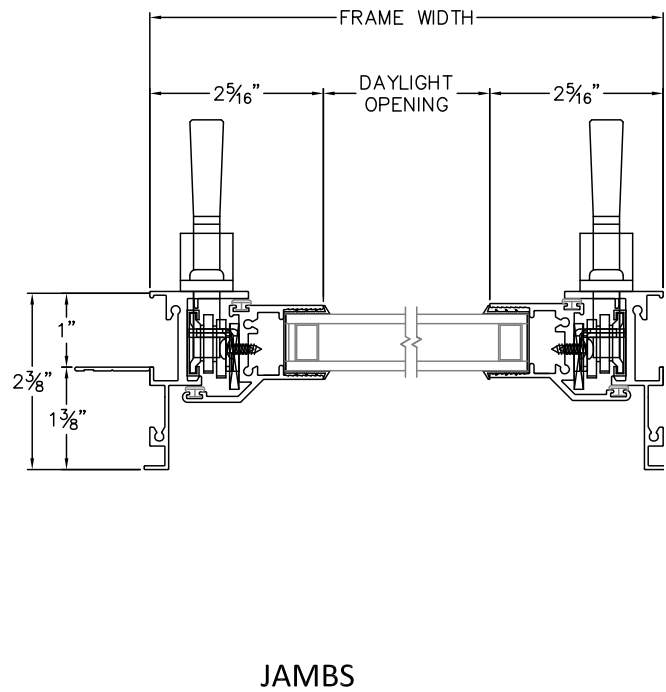
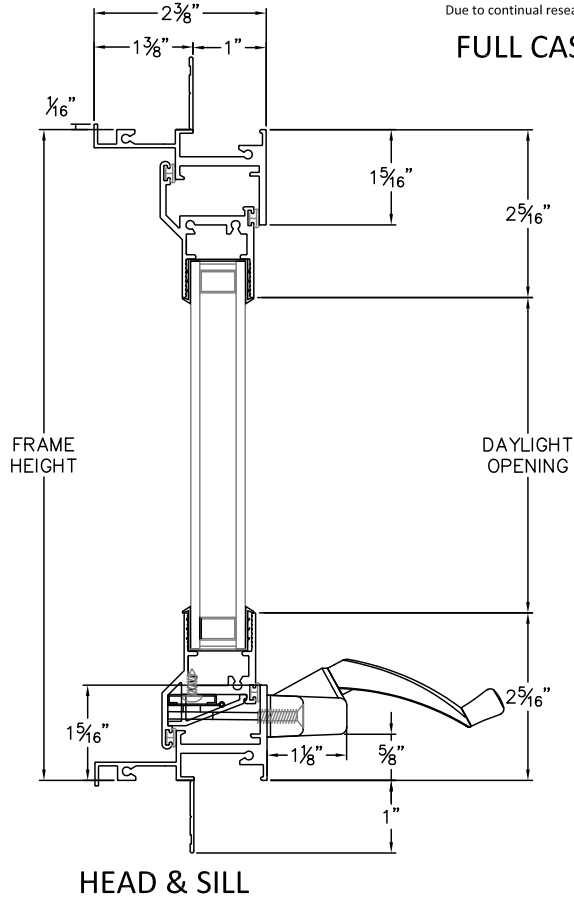
Casement Window

1-3/8" Setback - Crank Open

CAD File Scale	View	File Name	Units	Revis
NTS	Horizontal & Vertical	Aluminum_910S_FC_1.375in_crank_open	Inch	9/20

More Technical Documents can be found at milgard.com/professionals
Due to continual research and development, details may be changed at any time. ©2013 Milgard Mfg.

FULL CASEMENT - CRANK OPEN SERIES 910S



Revit, SketchUp, .PDF and .DWG files can be accessed at milgard.com/professionals or clicking here:

[Standard Aluminum Architectural Library](#)

[Go back to Quick Links](#)

Standard Aluminum

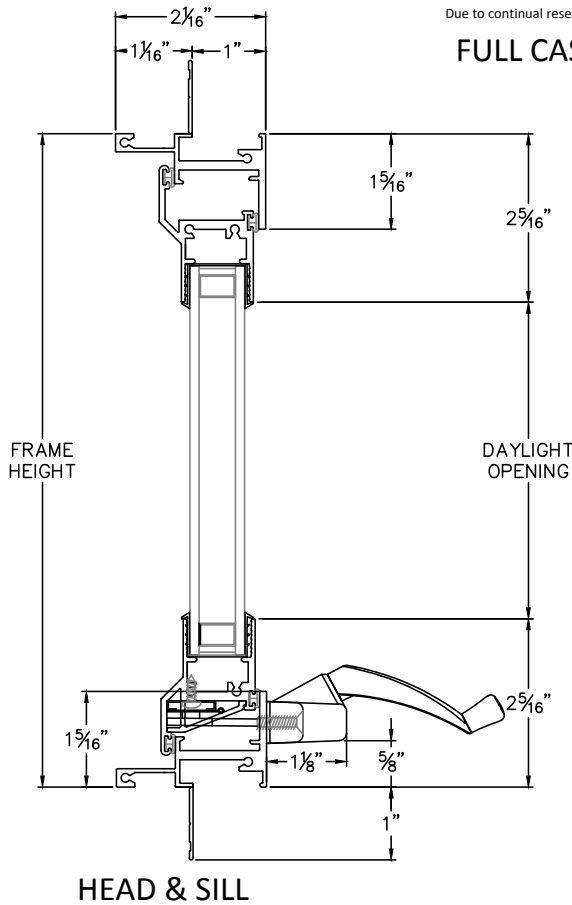
Casement Window

1-1/16" Setback - Crank Open

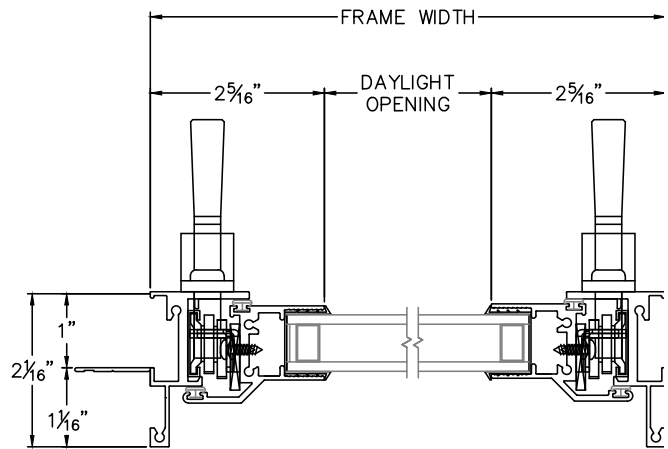
CAD File Scale	View	File Name	Units	Revi:
NTS	Horizontal & Vertical	Aluminum_910C_FC_1in_crank_open	Inch	9/21

More Technical Documents can be found at milgard.com/professionals
Due to continual research and development, details may be changed at any time. ©2013 Milgard Mfg.

FULL CASEMENT - CRANK OPEN SERIES 910S



HEAD & SILL



JAMBS

Revit, SketchUp, .PDF and .DWG files can be accessed at milgard.com/professionals or clicking here:

[Standard Aluminum Architectural Library](#)

[Go back to Quick Links](#)

Standard Aluminum

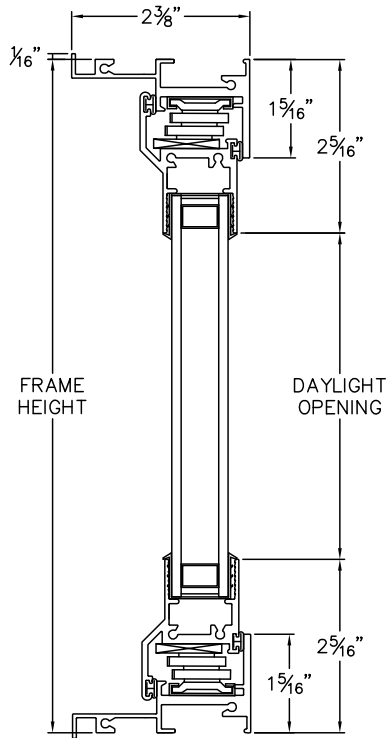
Casement Window

Block Frame - Push Open

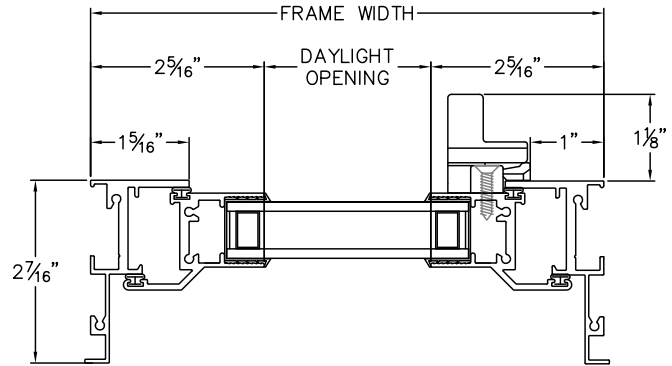
CAD File Scale	View	File Name	Units
NTS	Horizontal & Vertical	Aluminum_910S_FC_block_push-open	Inch

More Technical Documents can be found at milgard.com/professionals
Due to continual research and development, details may be changed at any time. ©2013 Milgard Mfg.

FULL CASEMENT - PUSH OPEN SERIES 910S



HEAD & SILL



JAMBS

Revit, SketchUp, .PDF and .DWG files can be accessed at milgard.com/professionals or clicking here:

[Standard Aluminum Architectural Library](#)

[Go back to Quick Links](#)

Standard Aluminum

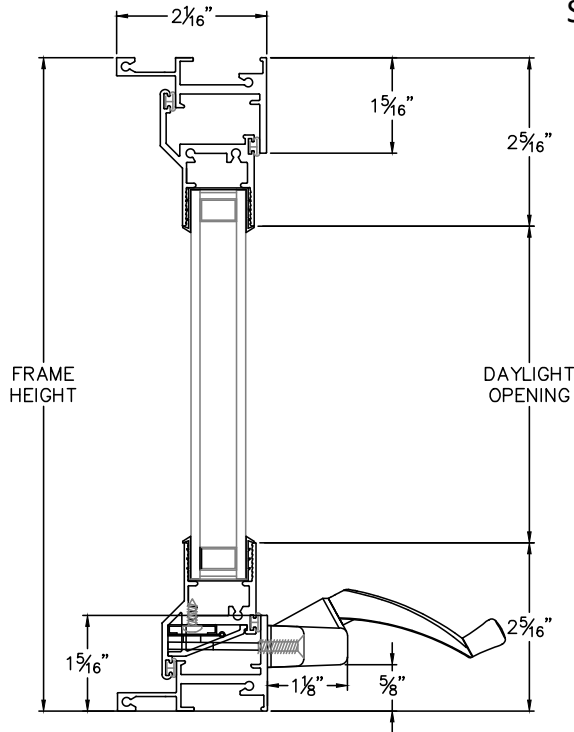
Casement Window

Block Frame - Crank Open

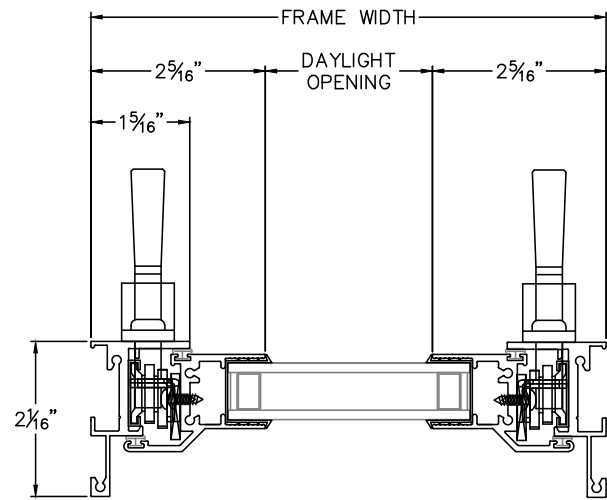
CAD File Scale	View	File Name	Units	Revi:
NTS	Horizontal & Vertical	Aluminum_910C_FC_block_crank_open	Inch	9/21

More Technical Documents can be found at milgard.com/professionals
Due to continual research and development, details may be changed at any time. ©2013 Milgard Mfg.

FULL CASEMENT - CRANK OPEN SERIES 910C



HEAD & SILL



JAMBS

Revit, SketchUp, .PDF and .DWG files can be accessed at milgard.com/professionals or clicking here:

[Standard Aluminum Architectural Library](#)

[Go back to Quick Links](#)